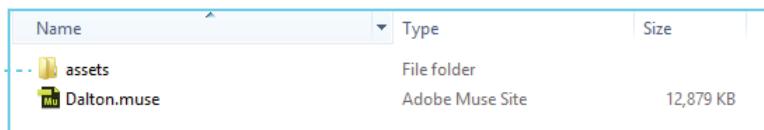


MUSE TEMPLATE - SETUP INSTRUCTIONS

By MuseThemes.com

1. Download the Adobe Muse website package (.zip). Extract the contents to a folder on your computer.



Name	Type	Size
assets	File folder	
Dalton.muse	Adobe Muse Site	12,879 KB

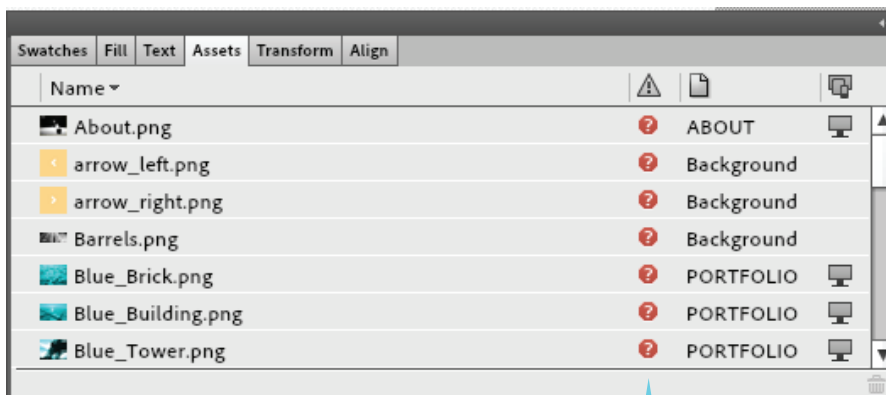
The **assets / images / links** folder contains all of the images and graphics used throughout the website



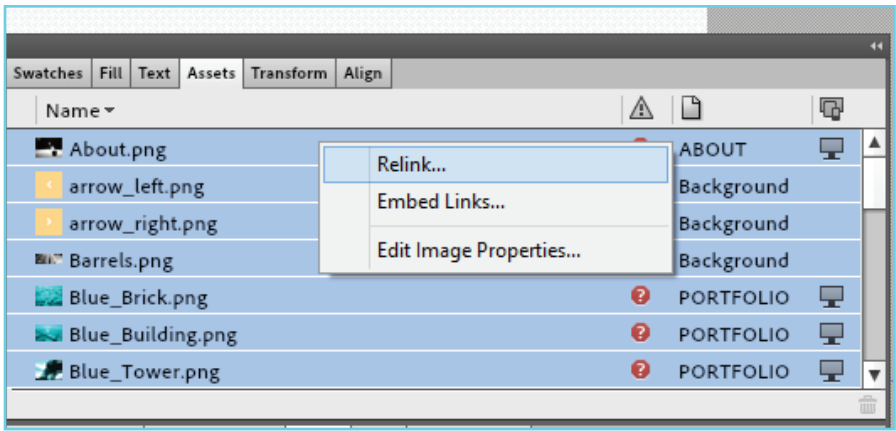
Name	Type	Size
assets	File folder	
Dalton.muse	Adobe Muse Site	12,879 KB

The **.muse** file is the working file for your website. This will open in Adobe Muse.

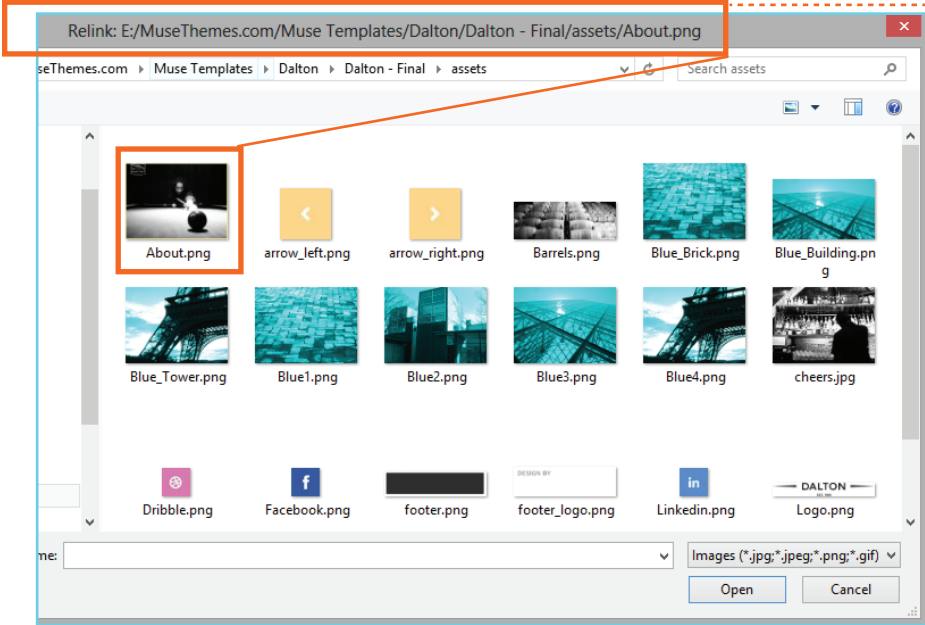
2. Open the .Muse file. In the assets panel on the right, linked assets (images / icons) are displayed as missing. You can relink the file by selecting the all, right clicking and selecting "relink assets".



Indicates missing assets



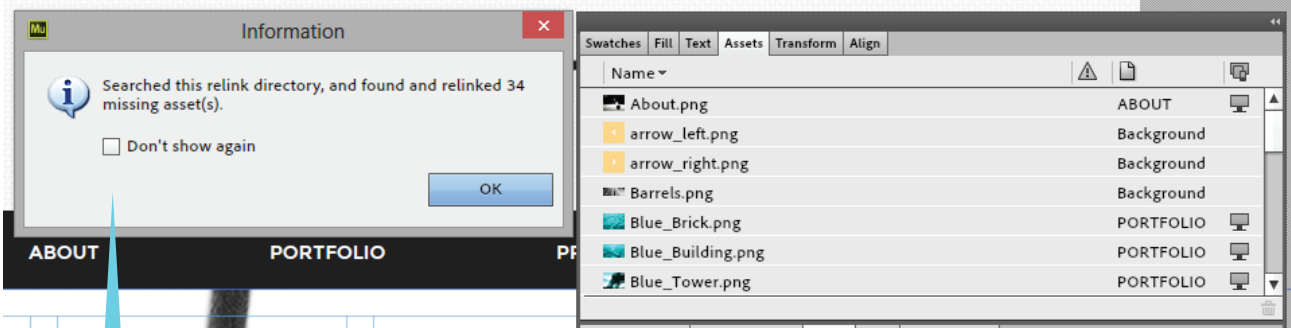
Select all of the missing assets, right click and select "Relink"



Navigate to the assets folder, and select the item displayed in the menu bar to relink it.

All of the other assets that are missing (and are located in that subfolder) will be automatically relinked.

Repeat these steps as needed for additional subfolders.



Assets are successfully relinked



LEARN MORE AT MUSETHEMES.COM

Download this premium template and others for one low annual price - join now!